

# STORAGE FACILITY INVESTMENT FOR SALE

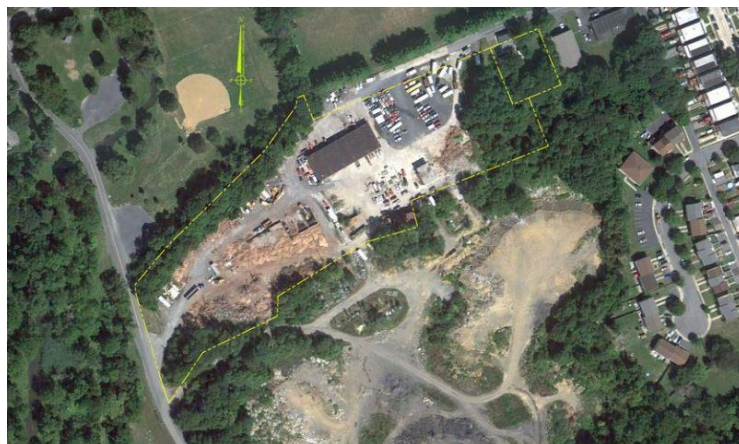


1940 W FAIRVIEW ST, ALLENTOWN, PA 18104



## PROPERTY HIGHLIGHTS

- 7.06 acres for Storage Facility Development
- Proposed plans for 469 Storage Units
- Plans include use of existing structure plus additional construction
- Approval and Plan information available
- Offered at \$1,500,000



PENNSYLVANIA ST ELMO AFFORDABLE SELF-STORAGE

FOR MORE INFORMATION, CONTACT:

**DOUG FREDERICK**

dougfederick@hannacre.com

610-398-0411

**Hanna CRE**

3500 Winchester Road, Suite 201

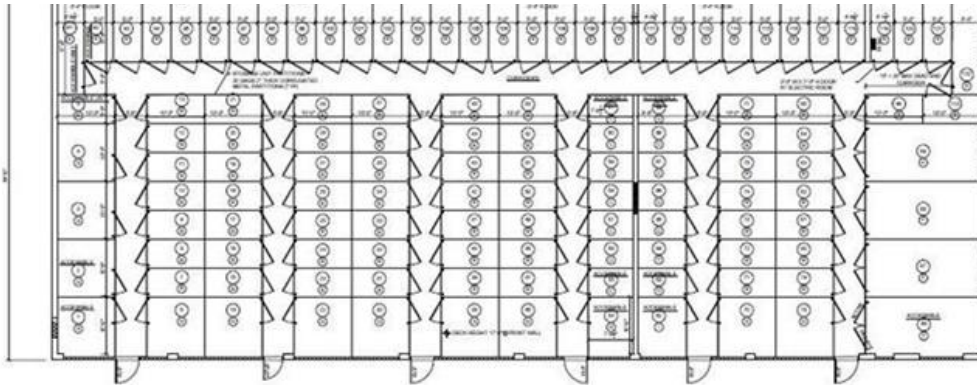
Allentown, PA 18104

[HANNACRE.COM](http://HANNACRE.COM)

All information furnished regarding property for sale, rental or financing is from sources deemed reliable. No representation is made as to the accuracy thereof, and it is submitted subject to errors, omissions, change of price, rental, or other conditions, prior sale lease, financing or withdrawal without notice. Hanna CRE will make no representation, and assume no obligation, regarding the presence or absence of toxic or hazardous waste or substances or other undesirable material on or about the property.

# STORAGE FACILITY INVESTMENT FOR SALE

1940 W FAIRVIEW ST, ALLENTOWN, PA 18104



BLOCK STORAGE BUILDING PLAN  
123 TOTAL STORAGE UNITS AS BUILT

SCHEME 2 STORAGE UNIT CHART

UNIT	AREA (SQ FT)	AREA (SQ FT)	AREA (SQ FT)	AREA (SQ FT)
1	100	100	100	100
2	100	100	100	100
3	100	100	100	100
4	100	100	100	100
5	100	100	100	100
6	100	100	100	100
7	100	100	100	100
8	100	100	100	100
9	100	100	100	100
10	100	100	100	100
11	100	100	100	100
12	100	100	100	100
13	100	100	100	100
14	100	100	100	100
15	100	100	100	100
16	100	100	100	100
17	100	100	100	100
18	100	100	100	100
19	100	100	100	100
20	100	100	100	100
21	100	100	100	100
22	100	100	100	100
23	100	100	100	100
24	100	100	100	100
25	100	100	100	100
26	100	100	100	100
27	100	100	100	100
28	100	100	100	100
29	100	100	100	100
30	100	100	100	100
31	100	100	100	100
32	100	100	100	100
33	100	100	100	100
34	100	100	100	100
35	100	100	100	100
36	100	100	100	100
37	100	100	100	100
38	100	100	100	100
39	100	100	100	100
40	100	100	100	100
41	100	100	100	100
42	100	100	100	100
43	100	100	100	100
44	100	100	100	100
45	100	100	100	100
46	100	100	100	100
47	100	100	100	100
48	100	100	100	100
49	100	100	100	100
50	100	100	100	100
51	100	100	100	100
52	100	100	100	100
53	100	100	100	100
54	100	100	100	100
55	100	100	100	100
56	100	100	100	100
57	100	100	100	100
58	100	100	100	100
59	100	100	100	100
60	100	100	100	100
61	100	100	100	100
62	100	100	100	100
63	100	100	100	100
64	100	100	100	100
65	100	100	100	100
66	100	100	100	100
67	100	100	100	100
68	100	100	100	100
69	100	100	100	100
70	100	100	100	100
71	100	100	100	100
72	100	100	100	100
73	100	100	100	100
74	100	100	100	100
75	100	100	100	100
76	100	100	100	100
77	100	100	100	100
78	100	100	100	100
79	100	100	100	100
80	100	100	100	100
81	100	100	100	100
82	100	100	100	100
83	100	100	100	100
84	100	100	100	100
85	100	100	100	100
86	100	100	100	100
87	100	100	100	100
88	100	100	100	100
89	100	100	100	100
90	100	100	100	100
91	100	100	100	100
92	100	100	100	100
93	100	100	100	100
94	100	100	100	100
95	100	100	100	100
96	100	100	100	100
97	100	100	100	100
98	100	100	100	100
99	100	100	100	100
100	100	100	100	100

**GOUCK ARCHITECTS**  
ARCHITECTS & ENGINEERS  
1000 Independence Blvd., Suite 200  
Allentown, PA 18106  
PH: 610-261-1111  
FAX: 610-261-1112

---

Project: Affordable Storage  
No. 1000 Independence Blvd., Suite 200  
Allentown, PA 18106  
Date: 10/15/18

FOR MORE INFORMATION, CONTACT:

**DOUG FREDERICK**  
dougfrederick@hannacre.com  
610-398-0411

**Hanna CRE**  
3500 Winchester Road, Suite 201  
Allentown, PA 18104  
[HANNACRE.COM](http://HANNACRE.COM)

All information furnished regarding property for sale, rental or financing is from sources deemed reliable. No representation is made as to the accuracy thereof, and it is submitted subject to errors, omissions, change of price, rental, or other conditions, prior sale lease, financing or withdrawal without notice. Hanna CRE will make no representation, and assume no obligation, regarding the presence or absence of toxic or hazardous waste or substances or other undesirable material on or about the property.