

# WAREHOUSE / DISTRIBUTION / MANUFACTURING FOR LEASE

50 HILTON STREET, EASTON, PA 18045

---



## PROPERTY HIGHLIGHTS

- Warehouse/distribution/manufacturing space
- Located near I-78
- Perfect for small manufacturing or distribution tenant
- \$5.50/SF



FOR MORE INFORMATION, CONTACT:

**JOSEPH MCDERMOTT**

[josephmcdermott@hannacre.com](mailto:josephmcdermott@hannacre.com)

**Hanna CRE**  
3500 Winchester Road, Suite 201  
Allentown, PA 18104  
[HANNACRE.COM](http://HANNACRE.COM)

All information furnished regarding property for sale, rental or financing is from sources deemed reliable. No representation is made as to the accuracy thereof, and it is submitted subject to errors, omissions, change of price, rental, or other conditions, prior sale lease, financing or withdrawal without notice. Hanna CRE will make no representation, and assume no obligation, regarding the presence or absence of toxic or hazardous waste or substances or other undesirable material on or about the property.

WAREHOUSE / DISTRIBUTION /  
MANUFACTURING  
**FOR LEASE**

50 HILTON STREET, EASTON, PA 18045

---



FOR MORE INFORMATION, CONTACT:

**JOSEPH MCDERMOTT**

josephmcdermott@hannacre.com

**Hanna CRE**

3500 Winchester Road, Suite 201

Allentown, PA 18104

[HANNACRE.COM](http://HANNACRE.COM)

All information furnished regarding property for sale, rental or financing is from sources deemed reliable. No representation is made as to the accuracy thereof, and it is submitted subject to errors, omissions, change of price, rental, or other conditions, prior sale lease, financing or withdrawal without notice. Hanna CRE will make no representation, and assume no obligation, regarding the presence or absence of toxic or hazardous waste or substances or other undesirable material on or about the property.



# FOR LEASE

50 HILTON STREET, EASTON, PA 18045

---



FOR MORE INFORMATION, CONTACT:

**JOSEPH MCDERMOTT**

[josephmcdermott@hannacre.com](mailto:josephmcdermott@hannacre.com)

**Hanna CRE**

3500 Winchester Road, Suite 201

Allentown, PA 18104

[HANNACRE.COM](http://HANNACRE.COM)

All information furnished regarding property for sale, rental or financing is from sources deemed reliable. No representation is made as to the accuracy thereof, and it is submitted subject to errors, omissions, change of price, rental, or other conditions, prior sale lease, financing or withdrawal without notice. Hanna CRE will make no representation, and assume no obligation, regarding the presence or absence of toxic or hazardous waste or substances or other undesirable material on or about the property.



WAREHOUSE / DISTRIBUTION /  
MANUFACTURING  
**FOR LEASE**

50 HILTON STREET, EASTON, PA 18045

---



FOR MORE INFORMATION, CONTACT:

**JOSEPH MCDERMOTT**

[josephmcdermott@hannacre.com](mailto:josephmcdermott@hannacre.com)

**Hanna CRE**

3500 Winchester Road, Suite 201

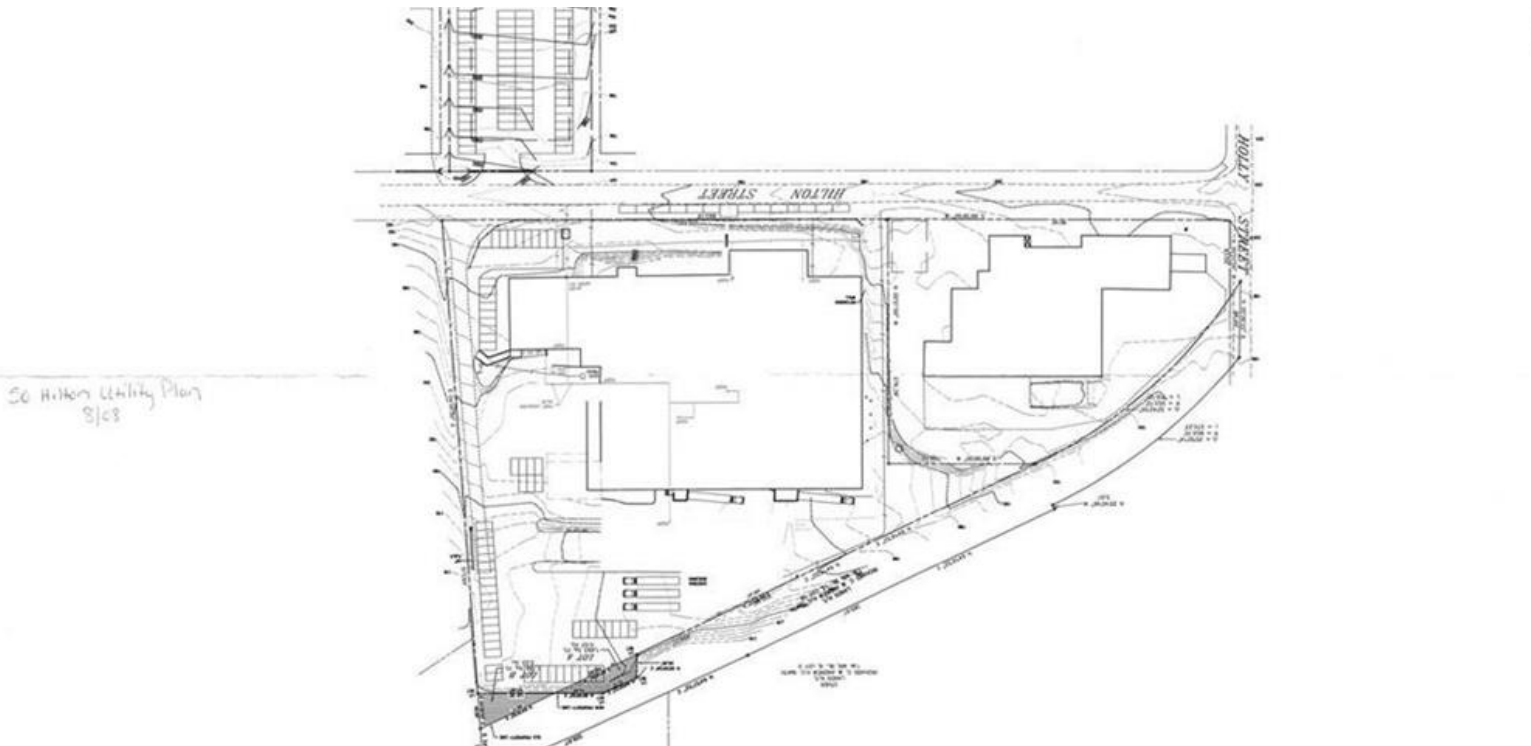
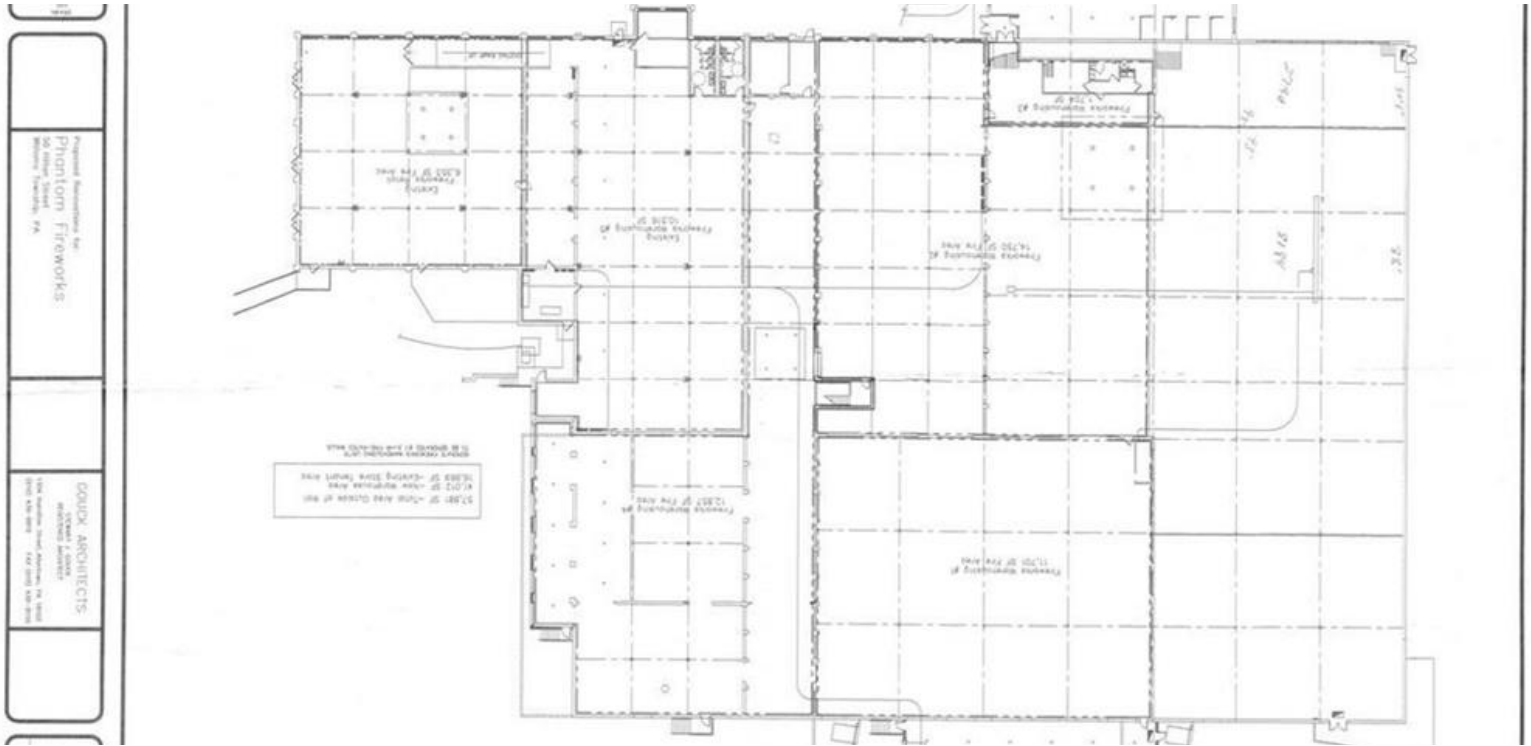
Allentown, PA 18104

[HANNACRE.COM](http://HANNACRE.COM)

All information furnished regarding property for sale, rental or financing is from sources deemed reliable. No representation is made as to the accuracy thereof, and it is submitted subject to errors, omissions, change of price, rental, or other conditions, prior sale lease, financing or withdrawal without notice. Hanna CRE will make no representation, and assume no obligation, regarding the presence or absence of toxic or hazardous waste or substances or other undesirable material on or about the property.

# WAREHOUSE / DISTRIBUTION / MANUFACTURING FOR LEASE

50 HILTON STREET, EASTON, PA 18045



FOR MORE INFORMATION, CONTACT:

**JOSEPH McDERMOTT**

joephmcdermott@hannacre.com

**Hanna CRE**

3500 Winchester Road, Suite 201

Allentown, PA 18104

[HANNACRE.COM](http://HANNACRE.COM)

All information furnished regarding property for sale, rental or financing is from sources deemed reliable. No representation is made as to the accuracy thereof, and it is submitted subject to errors, omissions, change of price, rental, or other conditions, prior sale lease, financing or withdrawal without notice. Hanna CRE will make no representation, and assume no obligation, regarding the presence or absence of toxic or hazardous waste or substances or other undesirable material on or about the property.